

# NOX-FILT

## User Guide for Occupants

Models: NOX-FILT & NOX-FILT2.5

Domus Ventilation's NOX-FILT range works in conjunction with a mechanical ventilation system to reduce the levels of pollution that can enter the home; improving indoor air quality and ultimately your everyday health.

Legislations within the UK construction industry encourage homes to be built with minimal air leakage to ensure optimum energy efficiencies. This has highlighted the importance of ventilation systems and consequently the filtration of air brought in to the home to ensure acceptable indoor air quality. The unit may sit on the supply leg of the ducting system which serves the 'living' areas of your home, such as bedrooms and sitting rooms.

There are two units available in the range with the only difference being what filters are included at purchase. The **NOX-FILT** houses a carbon filter cell only whereas the **NOX-FILT2.5** includes the same carbon filter cell plus a PM2.5 filter for Particulate Matter equal or larger in size to 2.5 microns.

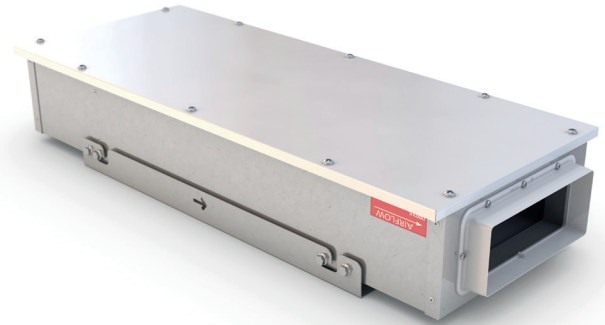
Should you wish to add a PM2.5 filter to your **NOX-FILT** this can be done at any time buy purchasing the filter separately. Please see following table for filter replacement codes.

The unit will have been installed by your housing provider in accordance with the latest building initiatives and as such should be maintained as per best practice recommendations.

### How do I operate the unit?

There are no adjustable running functions. As such the unit will function continuously, in addition to the ventilation system that will also be installed.

Unit Code	Carbon Filter Replacement	PM2.5 Filter Replacement
NOX-FILT	NOX-CF	n/a
NOX-FILT2.5	NOX-CF	NOX-PM2.5



### Is Maintenance Required?

#### NOX-FILT

The only maintenance required is filter replacement.

The life expectancy of the main carbon filter is 2 years, depending on installation environment. At this point replacement with a new cell is required.

#### NOX-FILT2.5

As well as the main carbon filter, there is an additional PM2.5 filter in this model. Domus Ventilation recommends replacement of this additional PM2.5 filter approximately every 12 months (dependent on installation environment).

Cardboard-framed pre-filters should be disposed of in your general waste for landfill/ incineration. Contact your local civic amenity site/ household waste recycling centre regarding metal/wire framed filters.

Visit [www.vent-spares.domusventilation.com](http://www.vent-spares.domusventilation.com) for filter replacements

Appropriate PPE (Personal Protective Equipment) should be worn during maintenance. Precautions may also be needed to protect the surrounding area from excess carbon residue.

### Contact Details

In the first instance please contact your housing provider or house builder.

Domus Ventilation have a team of technical experts on hand to help. Our operating hours are 9-5 Monday to Thursday and 9-4.30 Fridays (excluding Bank Holidays)

**Tel: 03443 715 523**

**Email: [vent.info@domusventilation.co.uk](mailto:vent.info@domusventilation.co.uk)**

**[www.domusventilation.co.uk](http://www.domusventilation.co.uk)**

When calling Domus Ventilation, if possible, please check your unit for the serial number located on the fan label.

