

User Guide For Occupants

▶ AQH200-B

Modern homes are built with extra insulation to keep warm air in and reduce energy costs. Whilst great for energy efficiency, this unfortunately leaves very little opportunity for your property to be naturally ventilated.

Adequate ventilation is critical to ensuring a healthy living environment that is free from condensation, odours and indoor pollutants caused by cooking, washing and day to day living.

Having a AQH200-B Mechanical Ventilation with Heat Recovery (MVHR) unit installed in your home will not only ensure that you benefit from good indoor air quality, it will protect the fabric of your home from condensation and mould, thus resulting in a healthier living environment.

HOW DO I OPERATE THE UNIT?

At installation your unit will have been set to run continuously to a level that will adequately ventilate your home for the majority of the day.

However, there will be occasions when the humidity/moisture levels in your home will rise; this is usually due to activities such as cooking and bathing or showering. During these times your unit has the functionality to increase its extract rates via a boost mode, and remove the excess moisture from the air.

There are a few ways in which the AQH200-B system can be set to boost. System settings should be determined as part of the installation, but you may override these functions with manual operation. The most common method is via remote switches which may also be provided at the time of install; usually situated in the kitchen and bathroom areas. To increase the extract rates manually simply set the switch to boost, and when you are ready to resume normal operation turn it back off.

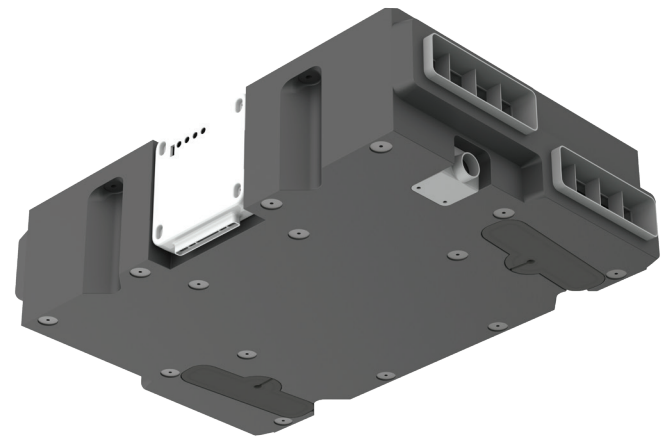
You can also wire remote sensors such as PIR or Humidity trackers that can boost the system performance.

Please note that your boost setting may have been commissioned with a run-on timer which will result in the boost function running between 5 to 30 minutes after it has turned off. This is to ensure the excess moisture is totally cleared.

YOUR VENTILATION SPECIALIST

03443 715 523

www.domusventilation.co.uk



WHAT MAINTENANCE IS REQUIRED?

The filters (located on the front of the unit) need to be inspected every 6 months and be cleaned or replaced, depending on your environment, every 12 months.

For replacement filters (they come as a pair) contact Domus Ventilation via the below details and quote part number SPR442. Please refer to Installation and Maintenance Instructions for disposal information.

IF I NEED SOME ADVICE, WHO DO I CONTACT?



In the first instance please contact your housing provider or house builder.

Domus have a team of technical experts on hand to help. For general enquiries please contact us on **03443 715 523** or email our team vent.info@domusventilation.co.uk.

When calling Domus, if possible, please check your fan for the serial number located on the fan label.



For ordering spares online please visit:
<https://domusventilation.co.uk/spares-accessories/>