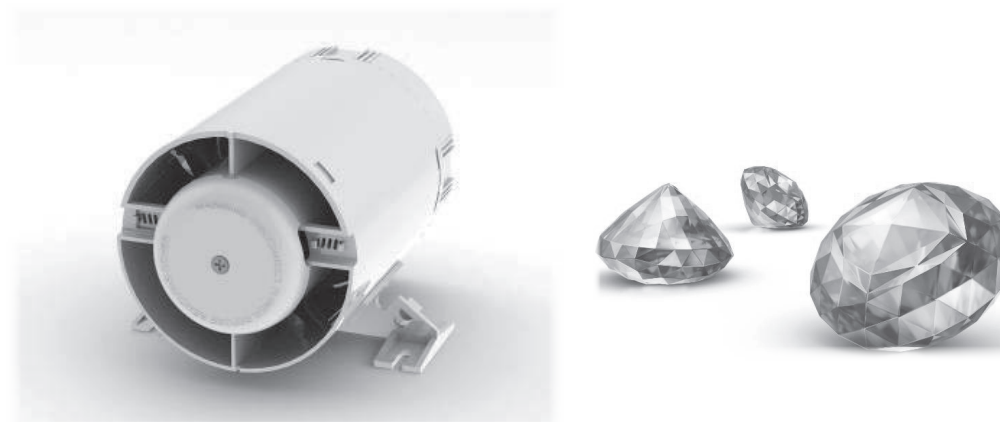


Installer contact details:

Company name:
Contact:
Tel:
Email:

Installation Instructions



Sapphire Range

GLD100AC Energy Efficient Axial In-line Fans

Sapphire I Energy Efficient

GLD100 Axial In-line Fans

These high quality bathroom and toilet extractor fans are designed to provide effective ventilation. To achieve this, please read these instructions carefully BEFORE installing the fan unit. Failure to comply with these instructions could reduce both the life and performance of the product and may invalidate the warranty.

This product is suitable for use with up to a maximum of 3.0m of ducting.

This fan can be used by children aged from 8 years and above and persons with reduced physical, sensory or mental capabilities or lack of experience and knowledge if they have been given supervision or instruction concerning use of the appliance in a safe way and understand the hazards involved. Children shall not play with the appliance. Cleaning and user maintenance shall not be made by children without supervision.

IMPORTANT NOTE: Before commencing any work read the following instructions carefully and ensure you have the necessary competency to complete the work safely.

WARNING: ISOLATE ELECTRICITY SUPPLY BEFORE STARTING WORK

Installation:

1. Select a suitable, stable position for the fan that keeps the overall duct run as short and as straight as possible. Using appropriate fixings, anchor the fan to its mounting surface (Diagram 1)
2. Cut a hole in the ceiling to suit the outside diameter of the ceiling grille duct spigot. Install the ceiling grille duct spigot from the room side using appropriate fixings and snap-on the grille fascia
3. Cut a hole in the soffit to suit the outside diameter of the external grille. Install the grille from the outside using appropriate fixings. Snap-in grille fascia

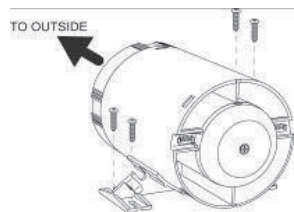


Diagram 1

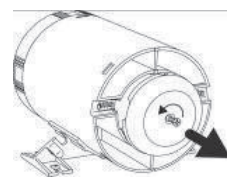


Diagram 2

4. Remove the central terminal cover by first removing the central Posidriv® retaining screw (Diagram 2).

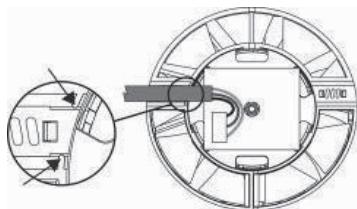


Diagram 3

Cable grips arrowed

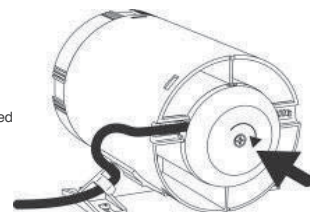


Diagram 4

7. Complete the wiring by following Diagram 6 below (for cable entry detail see Diagrams 3& 4)
8. Reassemble the fan using these instructions in reverse

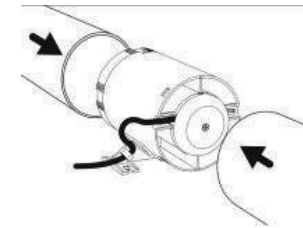


Diagram 5

9. Cut flexible hose into two pieces to suit the installation and connect to the fan and grilles using the tie-wraps supplied. Carefully cut a slit in the hose to allow clearance for the supply cable

Wiring Instructions:

It is recommended that the fans are connected into the lighting circuit, with double pole isolation (3mm minimum contact separation) provided before the room light switch and suitably fused, in accordance with the latest edition of the IEE Wiring Regulations.

Wall mounted fans for fixed wiring should be connected to the power supply through a cable with solid conductors of 1.0mm² or 1.5mm².

WARNING: ISOLATE ELECTRICITY SUPPLY BEFORE STARTING WORK

IF IN ANY DOUBT CONSULT A QUALIFIED ELECTRICIAN

SL = 230 Vac Switched Live L = 230 Vac Permanent Live N = Neutral

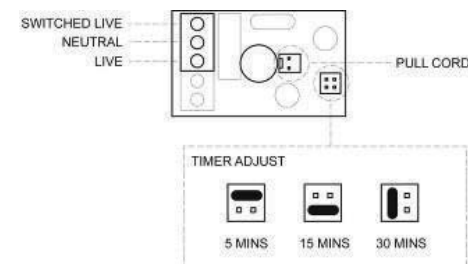


Diagram 6