

# SEMI-RIGID DUCT INSULATION

## TECHNICAL DATA SHEET

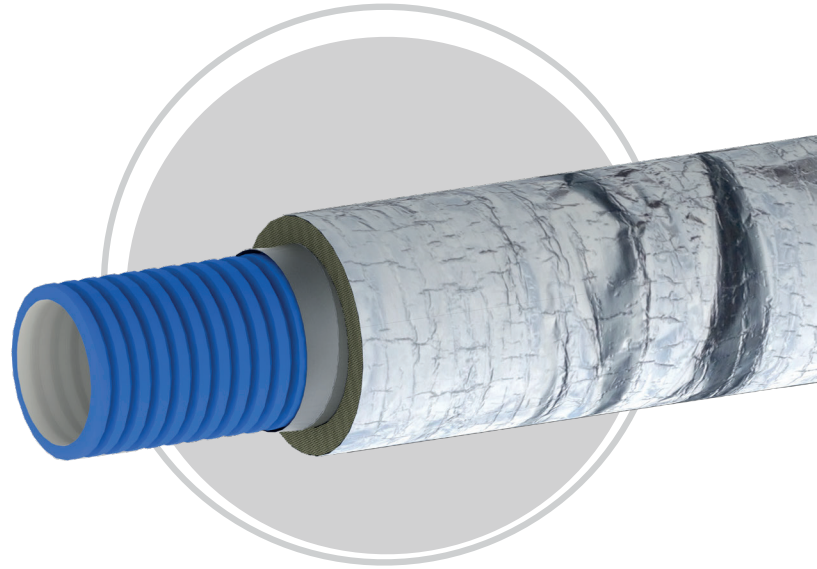
### CODE

RDI-25x5M

### DESCRIPTION

Constructed with an inner duct of reinforced aluminium/polyester with 25mm of fibreglass insulation and covered with an outer jacket, Domus Ventilation Radial duct insulation acts as an effective vapour barrier.

The jacket is a spirally-wound multi-layer aluminium/polyester laminated fabric reinforced with a fibreglass yarn, which provides an outstanding combination of strength and tear resistance.



### PERFORMANCE SPECIFICATION

- ▶ Insulation 25mm thick @ 0.04W/(m.K) with a density of 16kg/m<sup>3</sup>
- ▶ Working temperature range of -30°C to +140°C
- ▶ Supplied individually boxed in 5m lengths, compressed to 0.5m
- ▶ Successfully tested for fire resistance and conforms to BS476 Parts 6, 7 and 20

For further information please see

[www.domusventilation.co.uk](http://www.domusventilation.co.uk)

**YOUR  
VENTILATION  
SPECIALIST**

**03443 715 523**

[www.domusventilation.co.uk](http://www.domusventilation.co.uk)

domusventilation\_



©Domus Ventilation 2022. Issue date 2022-08

The information contained in this publication is correct at the time of print and is subject to change. Please visit our website for the latest information: [www.domusventilation.co.uk](http://www.domusventilation.co.uk)

E & OE We reserve the right to alter product specification without prior notice  
**Domus Ventilation** | Block C, Van Court, Caerphilly CF83 3ED, United Kingdom