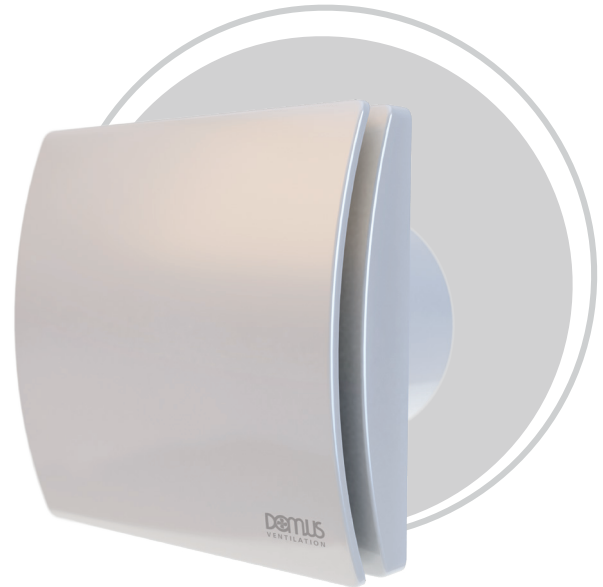


DMEV-NICO

OUR LATEST COMPLIANT EXTRACT FAN

FEATURES & BENEFITS

- ▶ Compliance – Building Regulations ADF & L (2021 edition) – to protect the health of your occupants
- ▶ Listed on the SAP PCDB database
- ▶ Cost effective extract solution
- ▶ Low maintenance and low life cycle costs
- ▶ Monitoring device – detect occupants operation
- ▶ Flexible compliant solution for kitchens, bathrooms, WC and utility areas
- ▶ Suitable for wall, ceiling and window applications
- ▶ Digital control for easy set up and commissioning
- ▶ 5 year warranty – peace of mind



Domus Ventilation's dMEV-NICO is a Decentralised Mechanical Extract Ventilation fan (dMEV) to provide continuous background extract ventilation for new build properties.

Built to achieve the ventilation rates as set out in the latest edition of Part F and L Building Regulations.



COMPLIANCE

Building Regulations Part F1 (1) are set to protect the health of the occupants of the building by providing adequate ventilation. Without adequate ventilation, mould and internal air pollution might become hazardous to health.



Table 1.3 Minimum whole dwelling ventilation rates determined by the number of bedrooms

Number of bedrooms ^(1/2)	Minimum ventilation rate by number of bedrooms (l/s)
1	19
2	25
3	31
4	37
5	43

Notes:

1. If the dwelling only has one habitable room, a minimum ventilation rate of 13 l/s should be used.
2. For each additional bedroom, add 6 l/s to the values in Table 1.3.

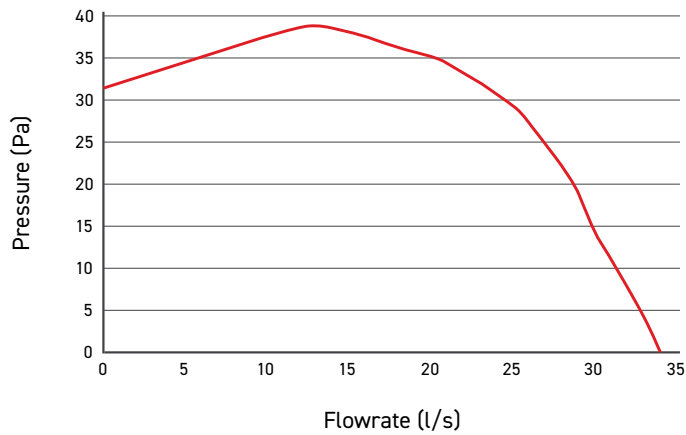
Table 1.2 Minimum extract ventilation rates continuous extract systems¹

Room	High rate (l/s)	Continuous rate
Kitchen	13	The sum of all extract ventilation in the dwelling on its continuous rate should be at least the whole dwelling ventilation rate given in Table 1.3.
Utility room	8	
Bathroom	8	
Sanitary accommodation	6	

Notes:

1. If the continuous rate of ventilation provided in a room is equal to or higher than the minimum high rate specified in the table, no extra ventilation is needed.

PERFORMANCE



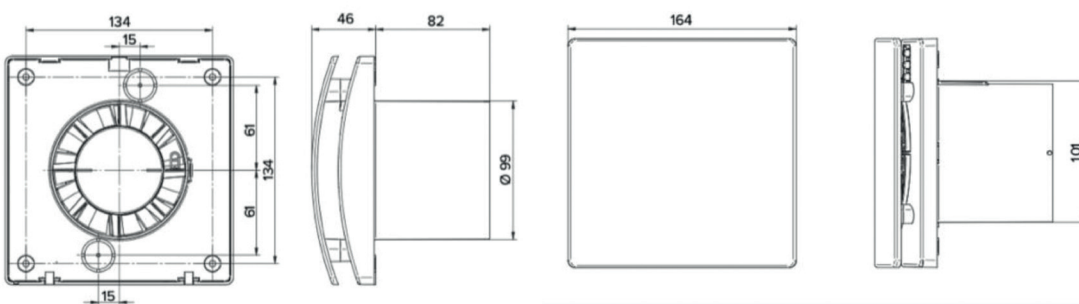
SFP Performance

FAN LOCATION	SFP (W/l/s)
In-room fan - kitchen	0.23
In-room fan - other wet room	0.28
Through-wall fan - kitchen	0.16
Through-wall fan - other wet room	0.23

Sound Performance

Unit	Duty (l/s)	Frequency Hz							LwA	dBA @ 3m
		125	250	500	1K	2K	4K	8K		
DMEV-NICO	34	39	44	52	47	48	43	30	54	33

DIMENSIONS



**YOUR
VENTILATION
SPECIALIST**

03443 715 523

www.domusventilation.co.uk

domusventilation_



©Domus Ventilation 2023. Part number: 672112 dMEV-NICO brochure. Issue date 2023-12

The information contained in this publication is correct at the time of print and is subject to change.

Please visit our website for the latest information: www.domusventilation.co.uk

Domus Ventilation | Climate House, Western Industrial Estate, Caerphilly, CF83 1BQ, UK